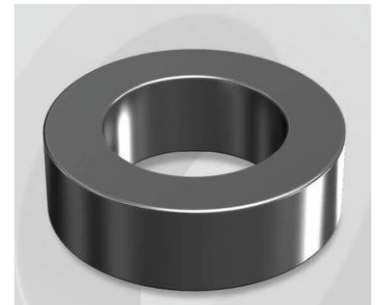


# CK571026G

OD : 571

## Electrical Characteristics

Material	Permeability ( $\mu$ )	AL $\pm$ 8% (nH/N <sup>2</sup> )	DCB (% min) @ 200 Oe	Coreloss (mW/cm <sup>2</sup> , max) @50kHz, 300G
Mega Flux	26	60	64.4	73



## Core Dimensions

Dimensions		Uncoated		Coated		Color	Packaging
		(mm)	(inch)	(mm)	(inch)		
OD	(Max)	57.15	2.250	58.00	2.283	Black	Box Qty = 77 pcs
ID	(min)	26.39	1.039	25.60	1.008		
HT	(max)	15.24	0.600	16.10	0.634		

## Physical Characteristics

Cross Section (A)	Path Length ( $l$ )	Window Area (W <sub>a</sub> )	Volume (V)	Breakdown Voltage (Vac)
2.29 cm <sup>2</sup>	12.5 cm	5.14 cm <sup>2</sup>	28.63 cm <sup>3</sup>	1,000
0.355 in <sup>2</sup>	4.921 in	1,014,407 cmil	1.75 in <sup>3</sup>	

## Winding Information

0% Winding length/turn (cm)		
6.460		
40% winding factor Surface Area (cm <sup>2</sup> )		
120.40		
40% Wound Di.(mm)		
OD	ID	HT
64.20	16.75	23.62

## Typical DC Bias Performance

